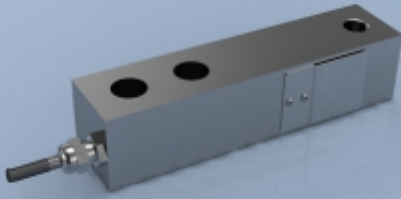


## TYPE: SBL-2



# SBL-2 Alloy Steel Shear Beam Load Cell

## Description

The SBL-2 series of shear beam load cells have been specifically designed for use in a wide range of weighing applications, including vessel weighing, floor scales and pallet trucks. There are a number of mounting accessories available to make installation easier and to ensure that the best system accuracy is maintained.

The SBL-2 offers high accuracy and superior immunity to shock or side loading. The nickel plating and full environmental sealing assures long term reliability.

The SBL-2 series can be supplied on its own or combined with our extensive range of instrumentation to provide a complete system.

## Features

- Ranges: 250, 500, 1000, 2000kg
- Alloy steel nickel plated construction
- Environmentally sealed to IP67
- Can be supplied with vessel mounting assembly, shock mounts or platform foot mounting assembly

## Specification

Rated load (kgs)	250, 500, 1000, 2000	
Proof load	150% of rated load	
Ultimate breaking load	>300% of rated load	
Output	2 mV/V at rated load ( $\pm 0.1\%$ )	
Accuracy	$< \pm 0.02\%$ of rated load	
Non-Repeatability	$< \pm 0.01\%$ of rated load	
Excitation voltage	10vdc recommended, 15vdc maximum	
Bridge resistance	350 $\Omega$	
Insulation resistance	>2000M $\Omega$ @ 100vdc	
Operating temperature range	-20 to +70°C	
Compensated temperature range	-10 to +40°C	
Zero temperature coefficient	$< \pm 0.002\%$ of rated load/°C	
Span temperature coefficient	$< \pm 0.001\%$ of rated load/°C	
Environmental protection level	IP67	
Connection type	6 wire PUR screened cable 3m long, via cable gland	
Wiring connections	+supply: Red	-supply: Black
	+signal: Green	-signal: White
	+sense: Blue	+sense: Brown

## Typical Applications

- Vessel weighing
- Floor scales
- Rolling roads
- MOT brake testers
- Pallet truck weighing
- Tank & silo weighing

## Available Options

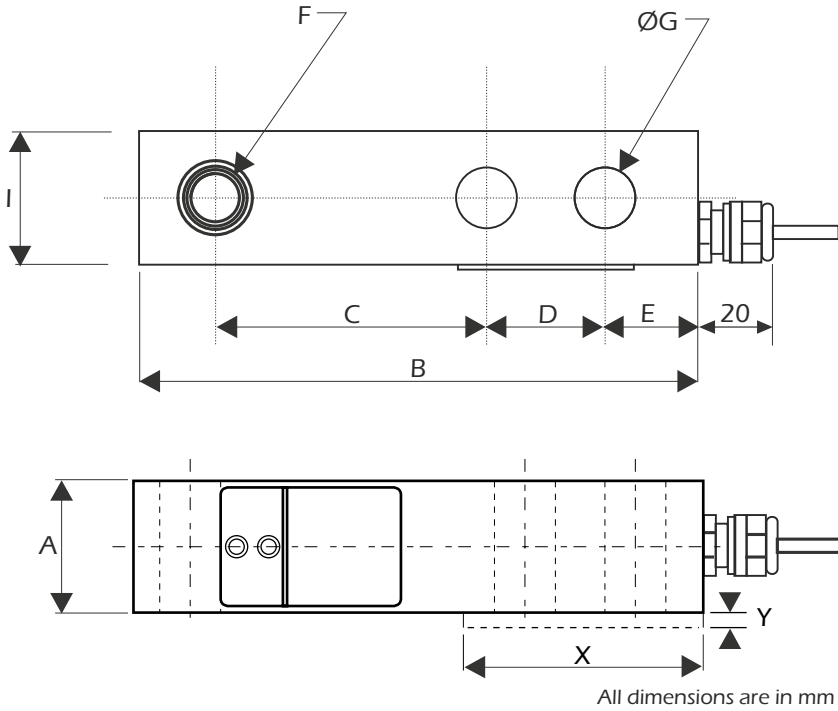
- Vessel mounting assembly
- Shock mounting assembly
- Platform foot mounting assembly
- Stainless steel versions
- TEDS option (when used with TR150 handheld display)

### LCM Systems Ltd

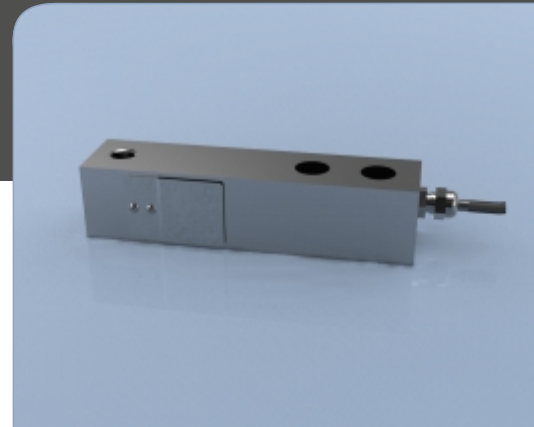
Unit 15, Newport Business Park  
Barry Way, Newport  
Isle of Wight PO30 5GY UK  
Tel: +44 (0)1983 249264  
Fax: +44 (0)1983 249266  
sales@lcm systems.com  
www.lcm systems.com

# SBL-2 Alloy Steel Shear Beam Load Cell

## Dimensions



Rating (kgs)	A	B	C	D	E	F	ØG	I	X	Y	Weight (kg)	Resolution (kg)
250	30.5	130	76.2	25.4	16	M12 X 1.75 or core bored Ø13.5 x 14.5 deep	13.5	30.5	57	4	1	0.02
500	30.5	130	76.2	25.4	16	M12 X 1.75 or core bored Ø13.5 x 14.5 deep	13.5	30.5	57	4	1	0.05
1000	30.5	130	76.2	25.4	16	M12 X 1.75 or core bored Ø13.5 x 14.5 deep	13.5	30.5	57	4	1	0.1
2000	36	130	76.2	25.4	16	M12 X 1.75 or core bored Ø13.5 x 14.5 deep	13.5	30.5	57	4	1.1	0.2



www.lcmsystems.com



**SCIGATE AUTOMATION (S) PTE LTD**  
 No.1 Bukit Batok Street 22 #01-01 Singapore 659592  
 Tel: (65) 6561 0488 Fax: (65) 6562 0588  
 Email: sales@scigate.com.sg Web: www.scigate.com.sg  
 Business Hours: Monday - Friday 8.30am - 6.15pm

Due to continual product development, LCM Systems Ltd reserves the right to alter product specifications without prior notice.

Issue No. 2  
 Issue date: 18/10/2016  
 APPROVED  
 (unapproved if printed)